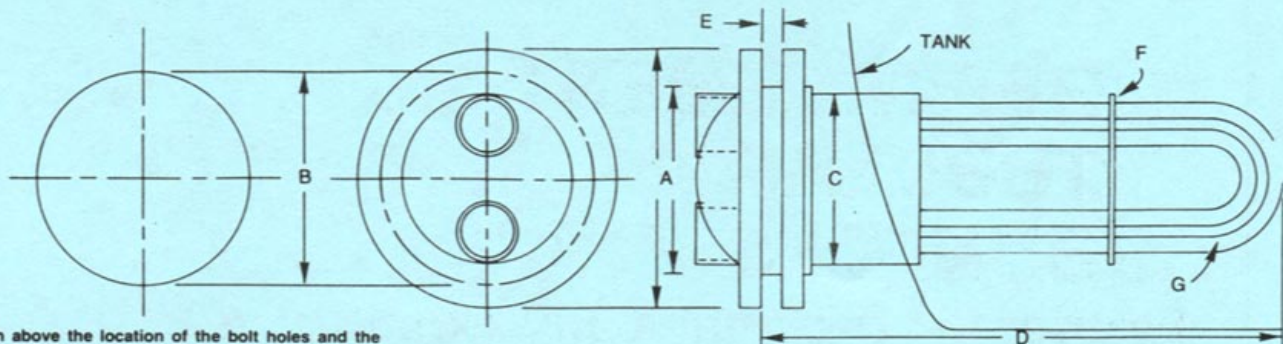


Steam Coil Replacement Bundles For Tanks



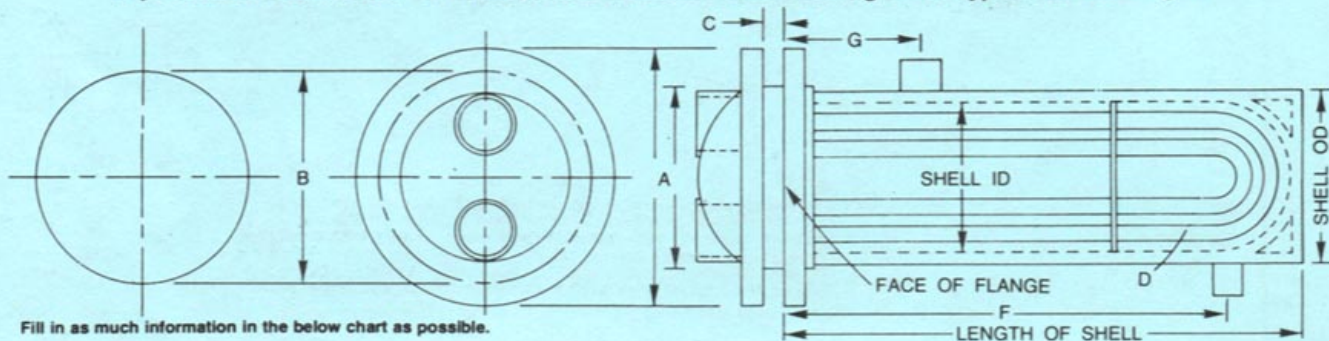
Sketch above the location of the bolt holes and the inlet and outlet connections of head of the existing coil bundle as related to the horizontal and vertical center lines.

(Typical Unit for Dimension Purposes)

Fill in as much information in the below chart as possible.

- Manufacturer of existing unit Model
- A. Dia. of tubesheet: Full (including bolt holes) OD or Inside of bolting OD
- B. Dia. of bolt hole circle Number of bolt holes Size of bolt holes
- C. Dia. of neck piece (collar) OD or ID. Is neckpiece cement lined? Yes or No
- D. Length of bundle Actual () or Approx. () Available clearance to remove bundle
- Note: If length of bundle is not available, then indicate the length of the tank
- E. Thickness of tube sheet; Material
- F. Thickness of spacer (tube support); Material; Diameter
- G. Tubing: Material; OD; Gauge (Wall thickness); Heating surface
- Number of 'U' bends; Center to center of two innermost rows

Replacement Bundles for "U" Tube, Fixed Tubesheet and Floating Head Type Heat Exchangers



Fill in as much information in the below chart as possible.

Sketch above the location of the bolt holes and the inlet and outlet connections of head of the existing coil bundle as related to the horizontal and vertical center lines.

- Manufacturer of existing unit Model
- Identify: In the shell: Steam () ; Water () ; Oil () ; Other ()
- In the tubes: Steam () ; Water () ; Oil () ; Other ()

Draw on the above sketch and identify as follows:

- A. Dia. of tubesheet: Full (including bolt holes) OD or Inside of bolting OD
- B. Dia. of bolt hole circle Number of bolt holes Size of bolt holes
- C. Thickness of tube sheet; Material
- D. Tubing: Material; OD; Gauge (Wall thickness); Heating surface; Number of "U" bends; Center to center of two innermost rows
- E. Length of shell; OD of shell; ID of shell
- F. Shell inlet: Distance from face of flange Size of nozzle
- G. Shell outlet: Distance from face of flange Size of nozzle

NOTE: Consult factory for prices on replacement bundles for Fixed Tubesheet and Floating Head type heat exchangers.